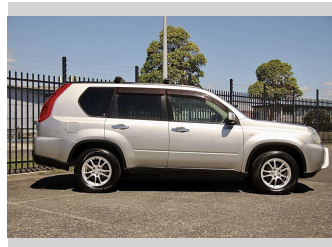
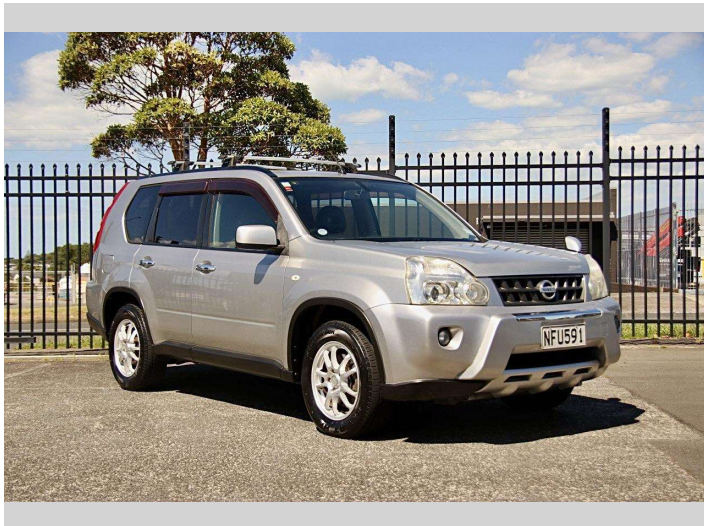



2008 Nissan X-Trail



Purchase Price **\$8,950**
Includes GST, Registration & Licensing

Indicative repayments
\$51.01 per week*
Based on a 60 month term & no deposit.
Total repayments (260) = **\$13,261.43**



Gain peace of mind with
Mechanical Breakdown
Insurance. **Ask us how.**



Top features

- » 4WD/4x4
- » ABS Brakes
- » Air Conditioning
- » Alloys
- » Bluetooth
- » CD Player
- » Electronic Stability C...
- » Factory Immobiliser
- » Factory Tinted Glass
- » just serviced
- » Power Steering
- » Rain Guards
- » Rear Wiper
- » Roof Racks
- » Smart Key System
- » Traction Control Syste...
- » USB

Body Style
5 door, Station Wagon

Odometer
168,512 km

Engine
1990 cc, Internal Combustion

Fuel Type
Petrol

Transmission
Auto

Wheels
Alloys

VIN
7AT0DH6LX20015437

Interior
Black/Grey

Safety
-

Reg No.
NFU591

Ext Colour
Silver

History
Ex-Overseas

Seats
5 seats

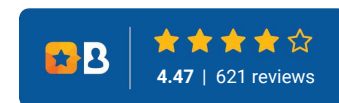
CO2 Emissions
-

Energy Economy
-

Stock ID: 49411



Auckland Cars | Phone 0800 000 468 | Email info@aucklandcars.nz
79 Felton Mathew Avenue, Saint Johns, Auckland 1072, New Zealand
www.aucklandcars.nz



* Auckland Cars is not a lender nor a financial adviser. Any amounts displayed should not be seen as an offer of finance or taken as financial advice. The interest rate, fees and loan term used in this calculation may not actually represent those available from lenders. Actual interest rates, fees and loan terms will vary per lender and are typically based on an assessment of your credit risk and responsible lending criteria. Any repayment amounts displayed are indicative only and have been calculated using several other indicative inputs. The interest rate used in this calculation is an arbitrary 13.95%, however exact interest rates vary per lender. The term of the loan used in this calculation is 60 month. Exact terms available vary per lender although options typically include 6, 12, 18, 24, 36, 48 and 60 months. This calculation also includes two typical mandatory fees charged by lenders. These are an account admin fee of \$1.50 per month (other payment frequencies may be available) and a one-off establishment fee of \$495.00. Typically, this fee can be paid upfront or, as in this calculation, be capitalised over the contract term, ie. included in the loan amount. These fees can vary per lender and other non-mandatory fees and charges may also apply. The total amount of repayments has been calculated by multiplying 260 weekly repayments (based on a 60 month term) by the weekly repayment amount of \$51.01 which equals \$13,261.43. This calculator does not consider any of your own personal circumstances and we strongly suggest you seek budgeting advice prior to committing to any loan contract. Responsible lending criteria and lender terms and conditions will likely apply to any finalised loan contract. Proof of security and/or vehicle insurance may also be required before proceeding.